

See.
Learn.
Discern.



VisualDx[®] student medicine

Student Medicine Challenge: Too much to learn – in too little time.

Visual pattern matching is a proven innate human ability, and 65% of the population learns best through visual content. There is a significant need for better medical training in visual diagnosis. Specialty areas of medicine, where visual diagnosis is key, typically receive only 1–2 days of instruction during 4 years of medical curriculum.

Student Medicine Ally: VisualDx Student Medicine. Visual diagnostic decision support.

Increase diagnostic confidence and expand knowledge exponentially with innovative medical technology, **VisualDx Student Medicine**. Get the intellectual power of a comprehensive digital medical image collection combined with concise clinical information, sorted by the most relevance to patient findings.

Designed to match the way a physician thinks, VisualDx Student Medicine dynamically builds patient-relevant differential diagnoses. It covers visually identifiable conditions on all skin types and for all age ranges, from neonate through elder adult.

VisualDx Student Medicine consists of the following content areas:

Single Lesion or Growth for:

- Neonate/Infant
- Child
- Adult
- Elder
- Dark Skin

Multiple Lesions or Rash for:

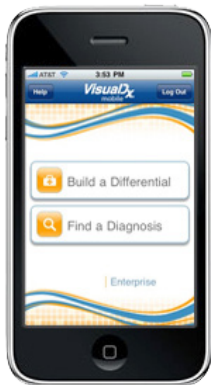
- Neonate/Infant
- Child
- Adult
- Elder
- Dark Skin

Specialized Content Areas including:

- Fever & Rash
- Nail & Distal Digit
- Oral Mucosa
- Immunocompromised
- Bites, Stings, & Infestations
- Drug Eruptions
- CA-MRSA

Now Available! VisualDx Mobile For Your iPhone or iPod Touch

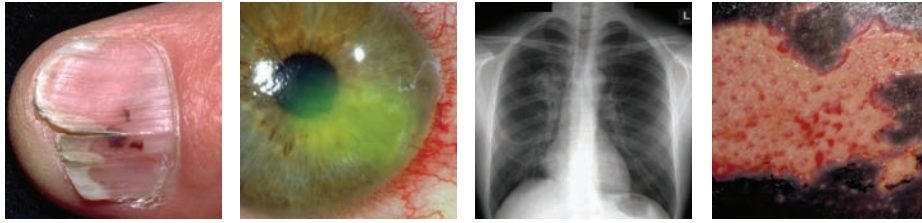
In just seconds, VisualDx Mobile lets you visually validate a diagnosis, look up next steps for management and patient care, or build a differential diagnosis for puzzling presentations – all from the palm of your hand.



For more information, visit:
www.visualdx.com/mobile

How to Subscribe

Interested in subscribing to VisualDx Student Medicine? To purchase a 1-year subscription for single-user access or to try it for free, visit www.amsa.org/visualdx.



See.
Learn.
Discern.

Transform learning – shift to pattern recognition.

VisualDx is proven to increase diagnostic accuracy by over 120% compared to using texts and atlases.

See. Visual clues are essential to accurate diagnosis, and half of all diseases have a skin or pattern clue. Yet how can we prepare clinicians to visually discern among common diagnoses – or diagnose a rare disease they have never seen?

Leap beyond current resources and get instant access to thousands of superior-quality medical images and relevant diagnostic insights based on presenting visual clues at the point of care.

Learn. Immediately expand your knowledge base. VisualDx delivers the intellectual power of the world’s most comprehensive medical image collection combined with concise and regularly updated clinical information – prepared by experts and physician scholars.

Rapid search entry of visible patient clues enhances learning, and day-to-day use improves recognition and response, resulting in higher quality care.

Discern. See disease variations by skin type, age, or passage of time, differentiating common flu-like conditions from those possibly caused by rare events or other emerging infectious diseases.

Build a customized pictorial differential diagnosis in seconds, drawn from thousands of medical photographs revealing variations in presentation between – as well as within – diseases. Make well-informed and accurate diagnoses.



VisualDx is recommended by AMSA. Now AMSA members can receive 3 free modules and discounted pricing on VisualDx Student Medicine. Take advantage of this special offer at www.amsa.org/visualdx



VisualDx Student Medicine

AMSA Member Pricing – includes 17 modules!
Medical Student Members – \$19.99
Practicing Physician Members – \$189.00
www.amsa.org/visualdx

Not an AMSA member?

Join AMSA today for special member discounted pricing and receive 3 free VisualDx modules.

VisualDx
visual diagnostic decision support **x**[®]

For more information on VisualDx, visit:
www.visualdx.com

Or call us at:
800.357.7611

